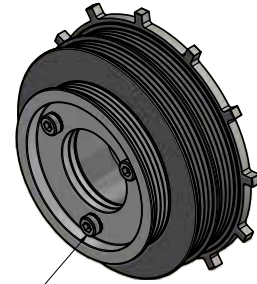
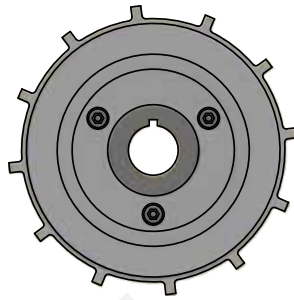
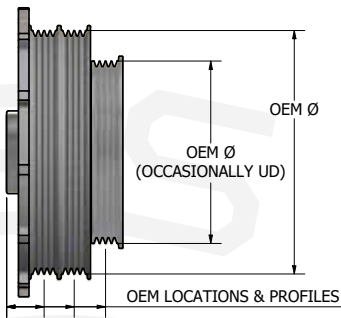


CHOOSING YOUR DAMPER SERIES

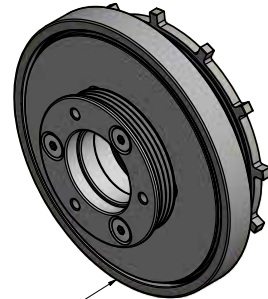
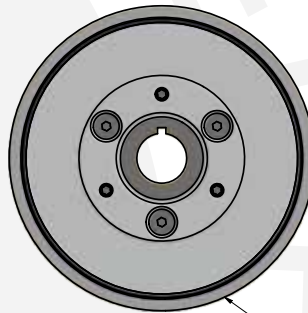
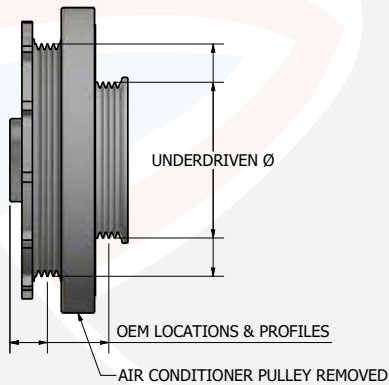
Metal Jacket Series - Performance OEM Replacement



REMOVE PS BOLTS TO FIT DRIVE MANDREL

- Designed for high-performance street application and occasional track use.
- Retains all OEM accessories - Alternator / Water Pump, Power Steering and Air Conditioner.
- True OEM fit maintaining OEM pulley diameters, locations and profiles.
- Power Steering pulley may be underdriven in some instances to improve performance at high rpm.

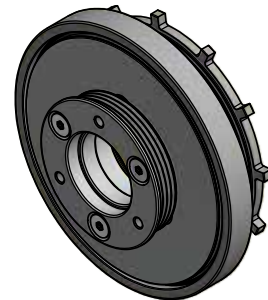
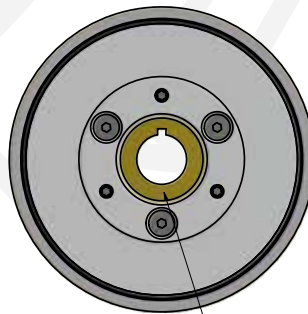
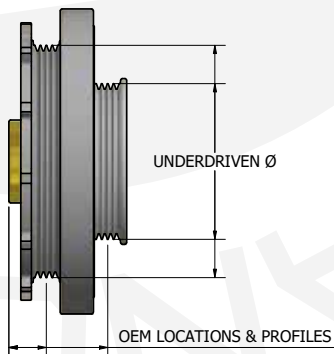
Race Series - High-Performance Harmonic Damping



DAMPING MASS CARTRIDGE

- Designed for racing applications.
- Designed for sustained high rpm with underdriven Alternator/ Water Pump and Power Steering pulleys.
- Typically Air Conditioner pulley removed to allow increased damping mass.
- Replaceable damper assembly for serviceability.
- Independent crank hub, damping mass and pulleys.
- Large diameter damping mass for increased inertia.

Gold Series - Top Tier Harmonic Damping



GOLD SERIES HUB - BRONZE ALLOY MATERIAL

- Designed for a professional race application.
- Identical pulley layout as Race Series.
- Ultra high-performance bronze alloy hub crank hub.
 - Reduces fretting and galling on the crank nose.
 - Allows for easy install and removal for regular engine tear down.

NOTE: All Ross Performance Parts Harmonic Dampers exceed ANDRA and SFI specifications.